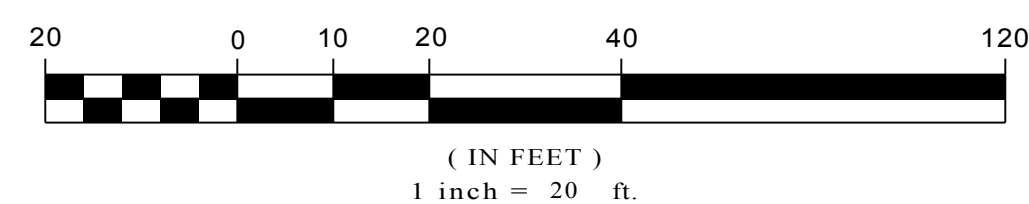


ZONE CLASSIFICATION: RESIDENTIAL R-15 (WITHIN FCOD)  
AREA OF LOCUS: 67,646± sq. ft/1.55± acres  
ASSESSORS REF: MAP 92 PARCEL 2627

	REQUIRED	PROVIDED
FRONTAGE:	20'	646.40'
SETBACKS:		
FRONT	10'	50"
SIDE	10'	17.4'
REAR	N/A	N/A
MAX. HEIGHT	3.5ST/40'	2ST/40'
PARKING REQUIREMENT:		
OFFICE - 1/250 GSF	66	70

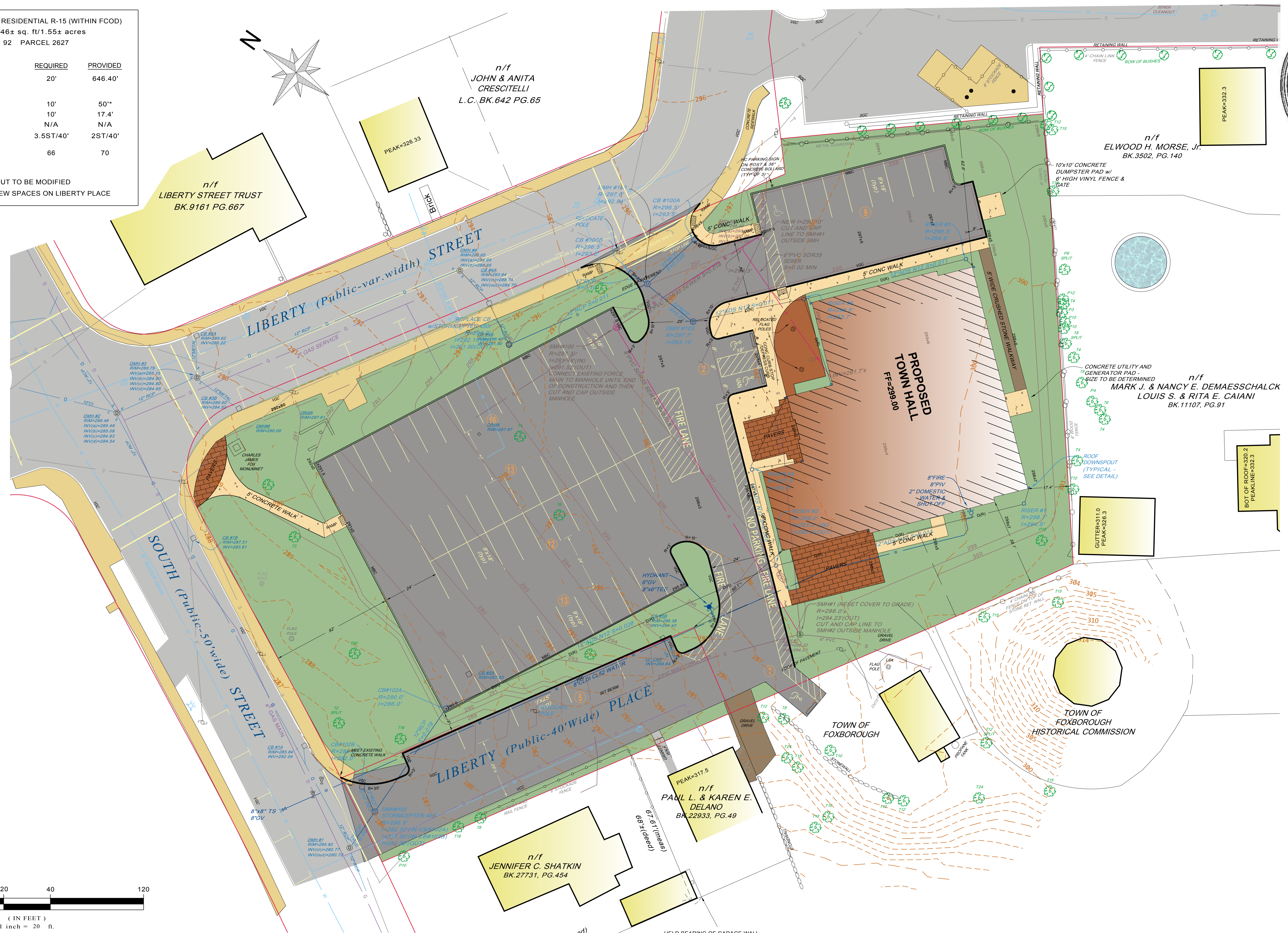
- NOTES:
- \*LIBERTY PLACE LAYOUT TO BE MODIFIED
  - \*PARKING INCLUDES NEW SPACES ON LIBERTY PLACE



MAY 28, 2015

## PROPOSED NEW TOWN HALL FOXBOROUGH, MA

BAY COLONY GROUP, INC.



14-0181C